



**State of Vermont**  
Department of Mental Health  
Commissioner's Office  
Redstone Office Building  
26 Terrace Street  
Montpelier VT 05609-1101  
<http://mentalhealth.vermont.gov/>

*Agency of Human Services*

[phone] 802-828-3824  
[fax] 802-828-1717  
[tty] 800-253-0191

## MEMORANDUM

TO: Joint Legislative Mental Health Oversight Committee  
Joint Health Care Committee

FROM: Paul Dupre, Commissioner of the Department of Mental Health

DATE: July 18, 2014

RE: July, 2014 Monthly DMH Report to the Mental Health Oversight Committee

---

Attached please find the July, 2014 report to the Committees on Mental Health and Health Care consistent with reporting provided to the general assembly in April 2014.

### **I. Reporting Provided to General Assembly**

- a. Utilization of Inpatient and Crisis Beds (FY2013-2014)
- b. Level 1 Inpatient Utilization: Statewide and by Hospital (2013-2014)
- c. Level 1 Inpatient Capacity and Utilization, Vermont Statewide (FY2012-FY2014)
- d. People with Involuntary Admissions, Comparison of Level 1 and Non-Level 1 (FY2013-FY2014)
- e. Average Numbers of People Waiting Inpatient Placement (2013-2014)
- f. Vermont State Hospital and Designated Hospitals, Emergency and Forensic Admissions (FY2002-2013)
- g. Wait Times in Hours for Involuntary Inpatient Admission (2013-2014)

### **II. Additional Reporting Requests**

- a. Sheriff Supervisions in Emergency Departments
- b. Involuntary Non-Level 1 and Level 1 bed days (FY2013)
- c. Average Distance to Psychiatric Inpatient Care (2014)
- d. Outstanding Reporting Requests in Development

### **III. Vermont Department of Mental Health System Snapshot (2012-2014)**

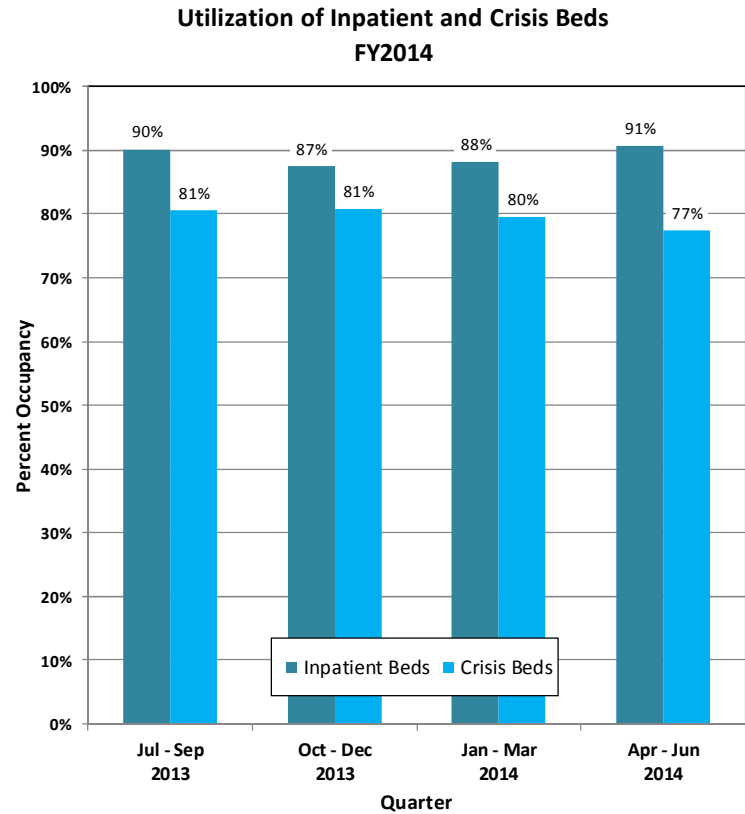
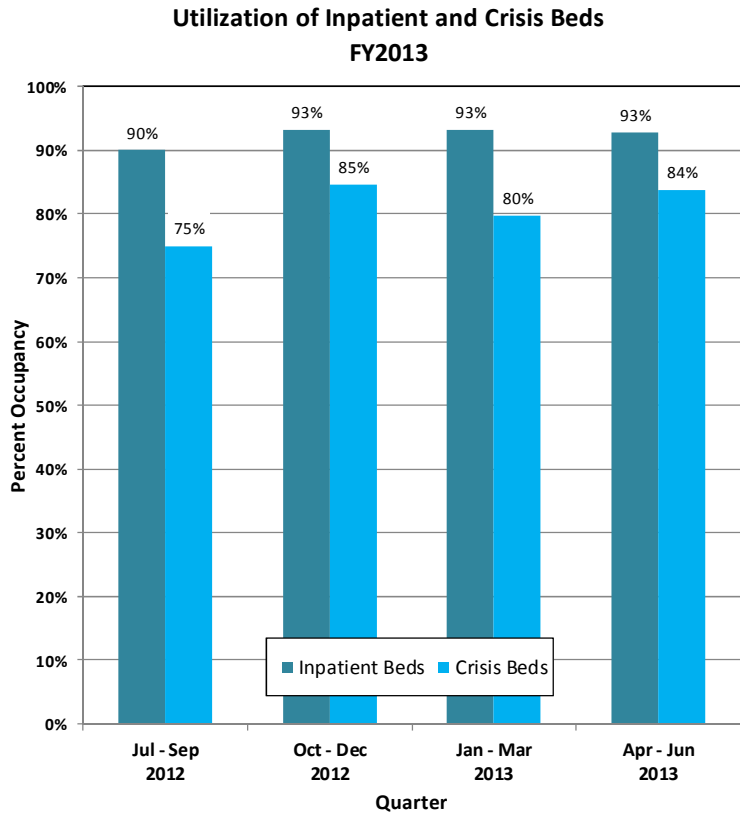
Respectfully submitted by the Department of Mental Health.

Please direct any inquiries for additional data collection or report content development to Paul Dupre, Commissioner of the Department of Mental Health; [paul.dupre@state.vt.us](mailto:paul.dupre@state.vt.us).

Joint Legislative Mental Health Oversight and Health Care Committees  
 Department of Mental Health July (2014)  
 July 18, 2014

**I. Reporting Provided to General Assembly**

a. Utilization of Inpatient and Crisis Beds (FY2013-2014)



Based on data reported to the Vermont Department of Mental Health (DMH) by crisis bed programs and inpatient facilities for adult care using the electronic bed boards system. Programs are expected to report to electronic bed boards a minimum of once per day to update their census. State averages are adjusted to exclude programs on days where there were no updates submitted to the bed board.

Based on data reported to the Vermont Department of Mental Health (DMH) by crisis bed programs and inpatient facilities for adult care using the electronic bed boards system. Programs are expected to report to electronic bed boards a minimum of once per day to update their census. State averages are adjusted to exclude programs on days where there were no updates submitted to the bed board.

b. Level 1 Inpatient Utilization: Statewide and by Hospital (2013-2014)

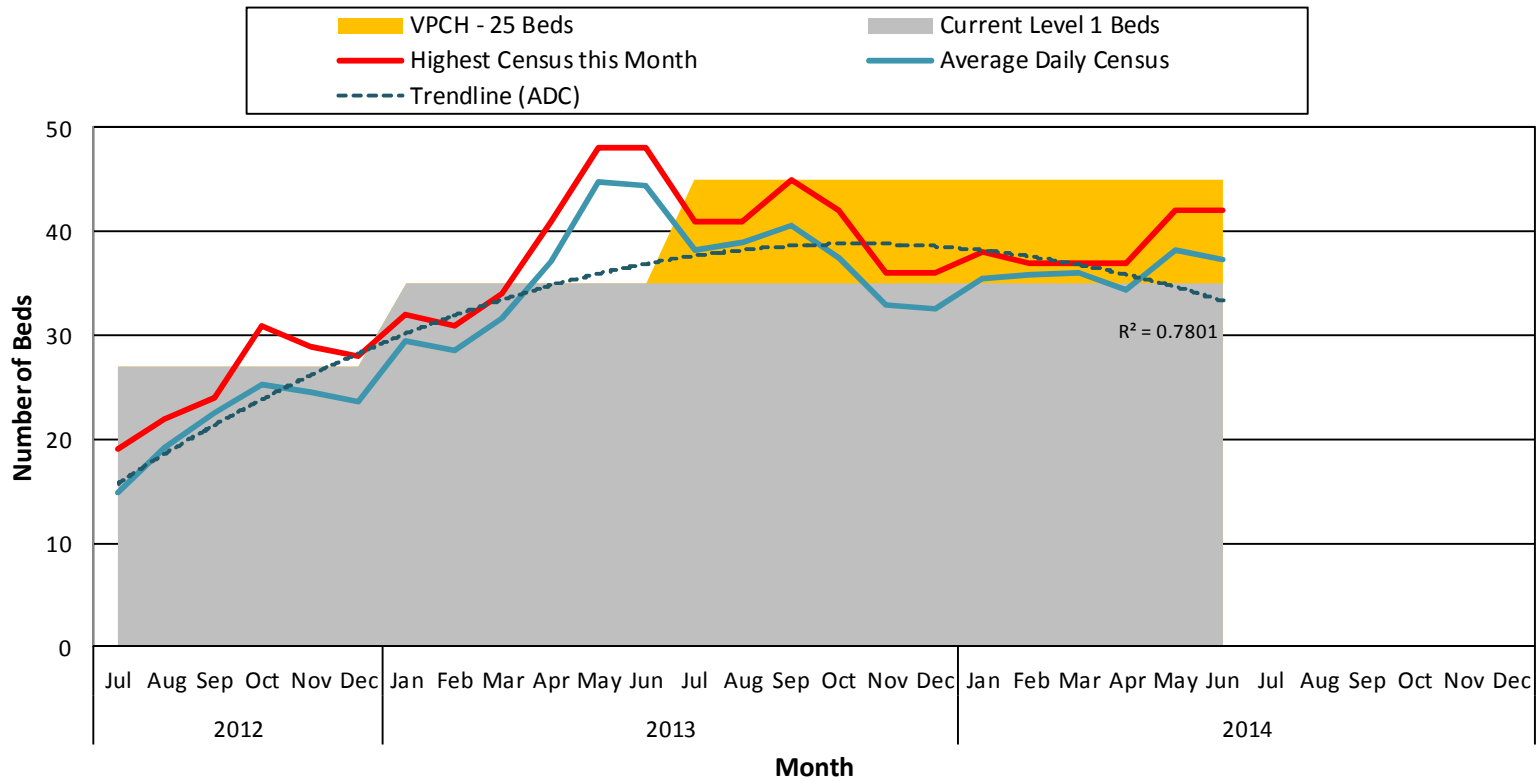
**Level 1 Inpatient Utilization: Statewide and By Hospital  
2013-2014**

SYSTEM TOTAL	2013												2014											
	Jan	Feb	Mar	Apr	May	Jun	Jul	Aug	Sep	Oct	Nov	Dec	Jan	Feb	Mar	Apr	May	Jun	Jul	Aug	Sep	Oct	Nov	Dec
Total Level 1 Beds	35	35	35	35	35	35	35	35	35	35	35	35	35	35	35	35	35	35						
Average Daily Census	29	29	32	37	45	44	38	39	41	38	33	33	36	36	36	34	38	37						
Total Level 1 Admissions this Month	22	13	20	22	26	10	19	18	13	12	7	14	14	8	10	10	17	16						
Level 1 Admissions to Non-L1 Units	-	-	-	-	-	4	8	12	8	5	3	7	9	7	6	7	10	8						
Total Level 1 Discharges this Month	17	17	13	15	19	17	19	18	15	15	11	10	14	9	8	9	13	21						
Highest Census this Month	32	31	34	41	48	48	41	41	45	42	36	36	38	37	37	37	42	42						
Over/Under for Total Planned Beds	UNDER	UNDER	UNDER	OVER	OVER	OVER	OVER	OVER	OVER	OVER	UNDER	UNDER	OVER	OVER	OVER	UNDER	OVER	OVER						
<b>BY HOSPITAL</b>																								
<b>Brattleboro Retreat</b>																								
Total Level 1 Beds	14	14	14	14	14	14	14	14	14	14	14	14	14	14	14	14	14	14						
Average Daily Census	14	16	19	18	21	20	16	17	19	18	17	15	17	17	17	18	21	19						
Total Admissions during Month	7	9	10	3	11	3	3	4	4	5	1	5	3	2	3	6	7	7						
Level 1 Admissions to Non-L1 Units	-	-	-	-	-	2	1	3	4	2	1	4	2	2	3	5	5	4						
Total Level 1 Discharges this Month	7	7	7	5	7	8	3	3	3	6	3	3	4	2	3	1	6	11						
Highest Census this Month	16	18	20	20	22	22	17	18	20	20	18	18	17	18	18	21	23	23						
Over/Under for Total Planned Beds	OVER	OVER	OVER	OVER	OVER	OVER	OVER	OVER	OVER	OVER	OVER	OVER	OVER	OVER	OVER	OVER	OVER	OVER						
<b>RRMC</b>																								
Total Level 1 Beds	6	6	6	6	6	6	6	6	6	6	6	6	6	6	6	6	6	6						
Average Daily Census	4	1	3	9	9	10	8	8	8	7	6	6	7	9	10	10	9	8						
Total Admissions during Month	2	0	5	8	8	2	4	5	5	3	4	5	10	3	1	2	4	5						
Level 1 Admissions to Non-L1 Units	-	-	-	-	-	0	1	2	2	0	0	0	7	3	0	1	1	1						
Total Level 1 Discharges this Month	5	2	0	4	8	2	6	6	5	4	4	5	7	2	1	2	5	6						
Highest Census this Month	6	3	6	11	11	11	10	9	8	8	7	8	9	10	10	11	10	9						
Over/Under for Total Planned Beds	UNDER	UNDER	UNDER	OVER	OVER	OVER	OVER	OVER	OVER	OVER	UNDER	OVER	OVER	OVER	OVER	OVER	OVER	OVER						
<b>VPCH</b>																								
Total Level 1 Beds	8	8	8	8	8	8	8	8	8	8	8	8	8	8	8	8	8	8						
Average Daily Census	5	5	4	4	6	6	7	6	6	7	6	6	6	6	6	5	5	5						
Total Admissions during Month	8	0	0	2	2	3	6	2	2	1	0	1	1	1	3	1	2	1						
Level 1 Admissions to Non-L1 Units	-	-	-	-	-	-	-	-	-	-	-	-	-	-	-	-	-	-						
Total Level 1 Discharges this Month	2	2	1	0	1	3	4	4	1	2	0	1	1	2	2	2	1	2						
Highest Census this Month	7	6	4	5	6	6	8	7	7	7	6	6	6	6	6	6	6	6						
Over/Under for Total Planned Beds	UNDER	UNDER	UNDER	UNDER	UNDER	UNDER	UNDER	UNDER	UNDER	UNDER	UNDER	UNDER	UNDER	UNDER	UNDER	UNDER	UNDER	UNDER						
<b>FAHC</b>																								
Total Level 1 Beds	7	7	7	7	7	7	7	7	7	7	7	7	7	7	7	7	7	7						
Average Daily Census	6	6	6	6	9	9	7	9	8	6	5	5	5	3	3	2	2	5						
Total Admissions during Month	5	4	5	9	5	2	6	7	2	3	2	3	0	2	3	1	4	3						
Level 1 Admissions to Non-L1 Units	-	-	-	-	-	2	6	7	2	3	2	3	0	2	3	1	4	3						
Total Level 1 Discharges this Month	3	6	5	6	3	4	6	5	6	3	4	1	2	3	2	4	1	2						
Highest Census this Month	8	8	8	8	11	10	8	10	11	7	6	6	6	4	4	4	3	4						
Over/Under for Total Planned Beds	UNDER	UNDER	UNDER	UNDER	OVER	OVER	UNDER	OVER	OVER	UNDER	UNDER	UNDER	UNDER	UNDER	UNDER	UNDER	UNDER	UNDER						

Analysis is based on the Inpatient Tracking Spreadsheet maintained by the Department of Vermont Health Access (DVHA). Includes psychiatric hospitalizations with Level 1 Designations for hospitalizations occurring at adult inpatient psychiatric units. Level 1 designation is reserved for patients with risk of imminent harm to self or others and requiring significant resources. 'Over/Under for Total Planned Beds' is computed using the difference between total level 1 beds and average daily census for each hospital and statewide. Unit of admission is available from June 2013 onward.

c. Level 1 Inpatient Capacity and Utilization, Vermont Statewide (FY2012-FY2014)

### Level 1 Inpatient Capacity and Utilization Vermont Statewide



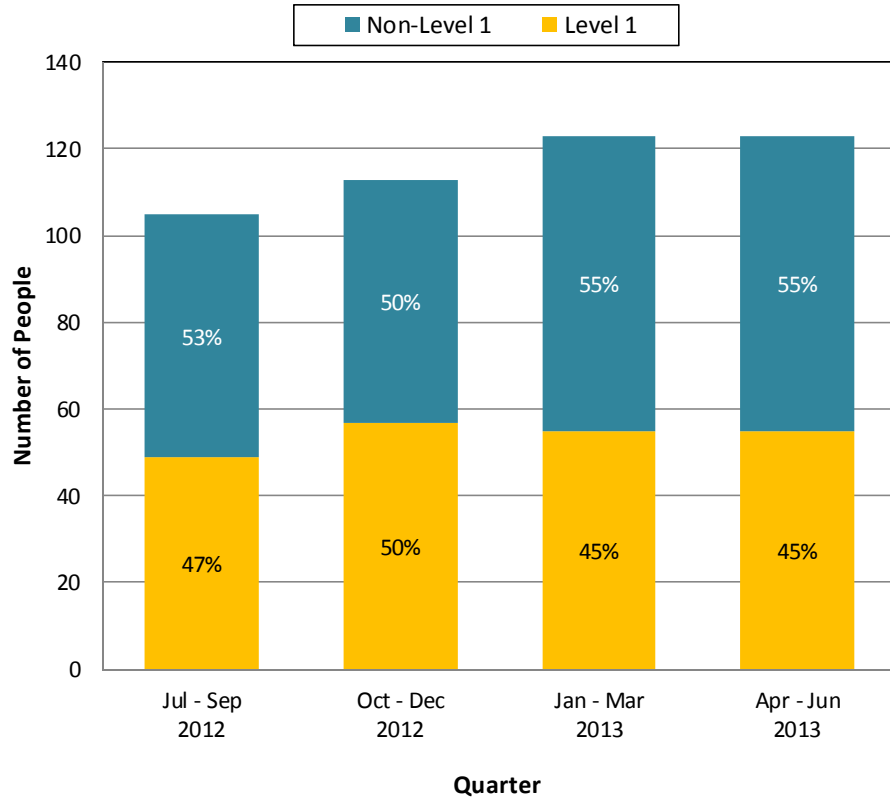
VPCH opened 8 Level 1 beds in January 2013

RRMC opened 6 Level 1 beds in April 2013

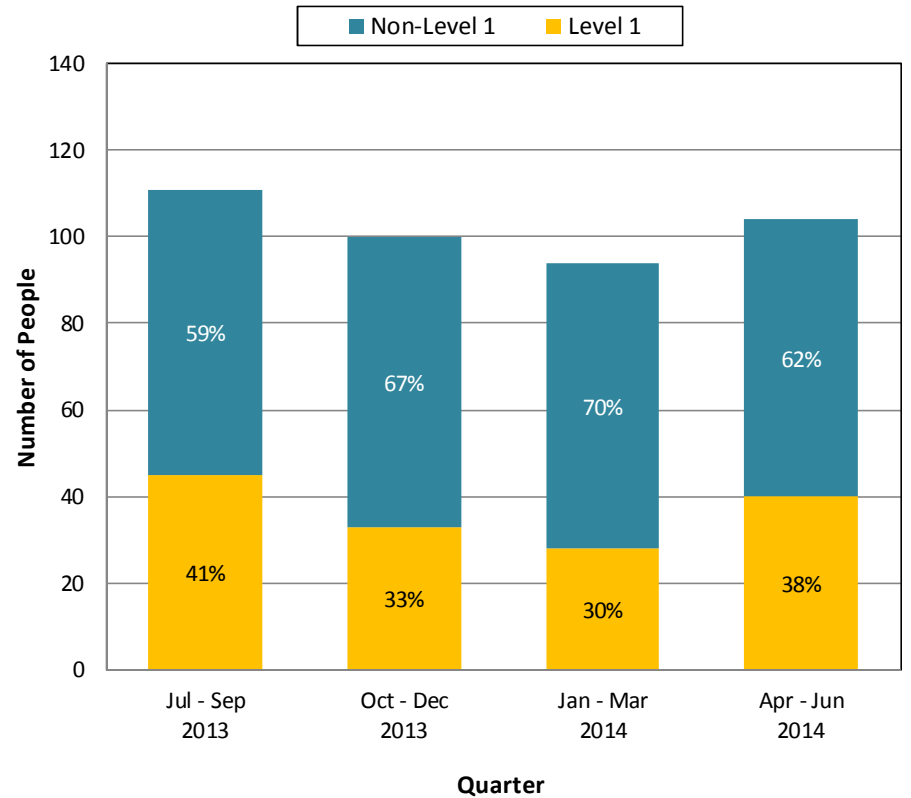
Analysis is based on the Inpatient Tracking Spreadsheet maintained by the Department of Vermont Health Access (DVHA). Includes psychiatric hospitalizations with Level 1 Designations for hospitalizations occurring at adult inpatient psychiatric units. Level 1 designation is reserved for patients with risk of imminent harm to self or others and requiring significant resources.

d. People with Involuntary Admissions, Comparison of Level 1 and Non-Level 1 (FY2013-FY2014)

**People with Involuntary Admissions  
Comparison Level 1 and Non-Level 1  
FY 2013**



**People with Involuntary Admissions  
Comparison Level 1 and Non-Level 1  
FY 2014**

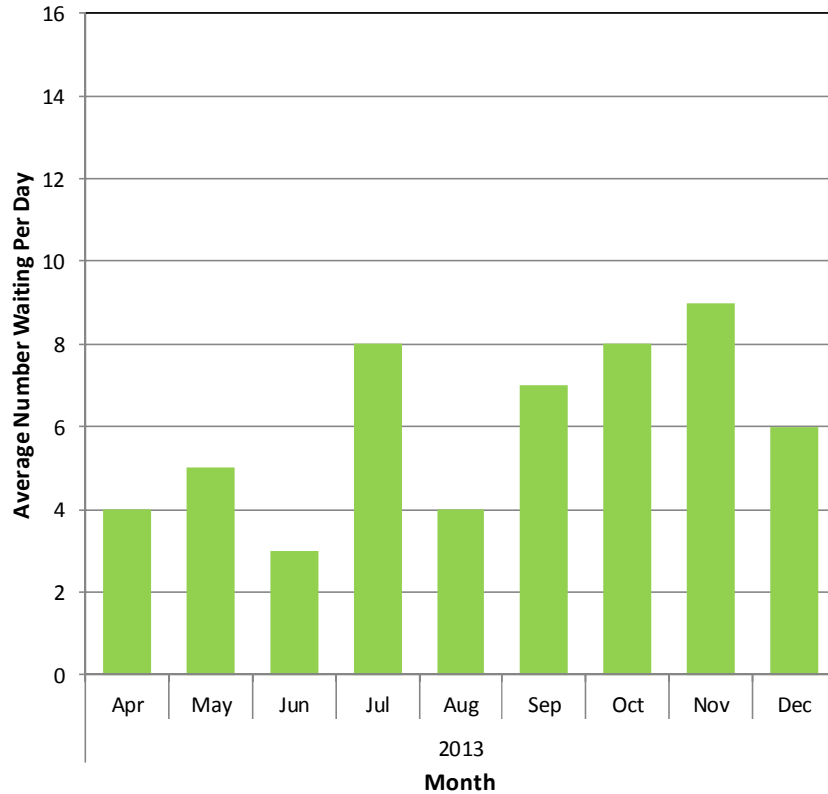


Analysis is based on the Inpatient Tracking Spreadsheet maintained by the Department of Vermont Health Access (DVHA) for psychiatric hospitalizations with Level 1 Designations, and adult inpatient psychiatric tracking spreadsheet maintained by the Department of Mental Health (DMH), Care Management Unit. Level 1 designation is reserved for patients with risk of imminent harm to self or others and requiring significant resources.

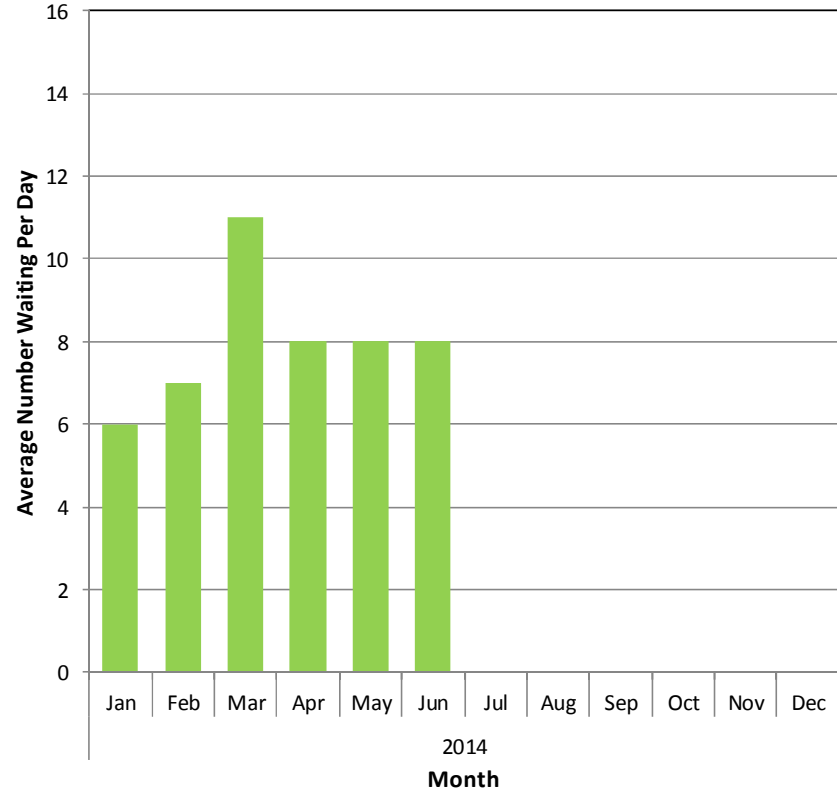
Analysis is based on the Inpatient Tracking Spreadsheet maintained by the Department of Vermont Health Access (DVHA) for psychiatric hospitalizations with Level 1 Designations, and adult inpatient psychiatric tracking spreadsheet maintained by the Department of Mental Health (DMH), Care Management Unit. Level 1 designation is reserved for patients with risk of imminent harm to self or others and requiring significant resources.

e. Average Numbers of People Waiting Inpatient Placement (2013-2014)

**Average Numbers of People Waiting Inpatient Placement  
April 2013 - December 2013**



**Average Numbers of People Waiting Inpatient Placement  
2014**

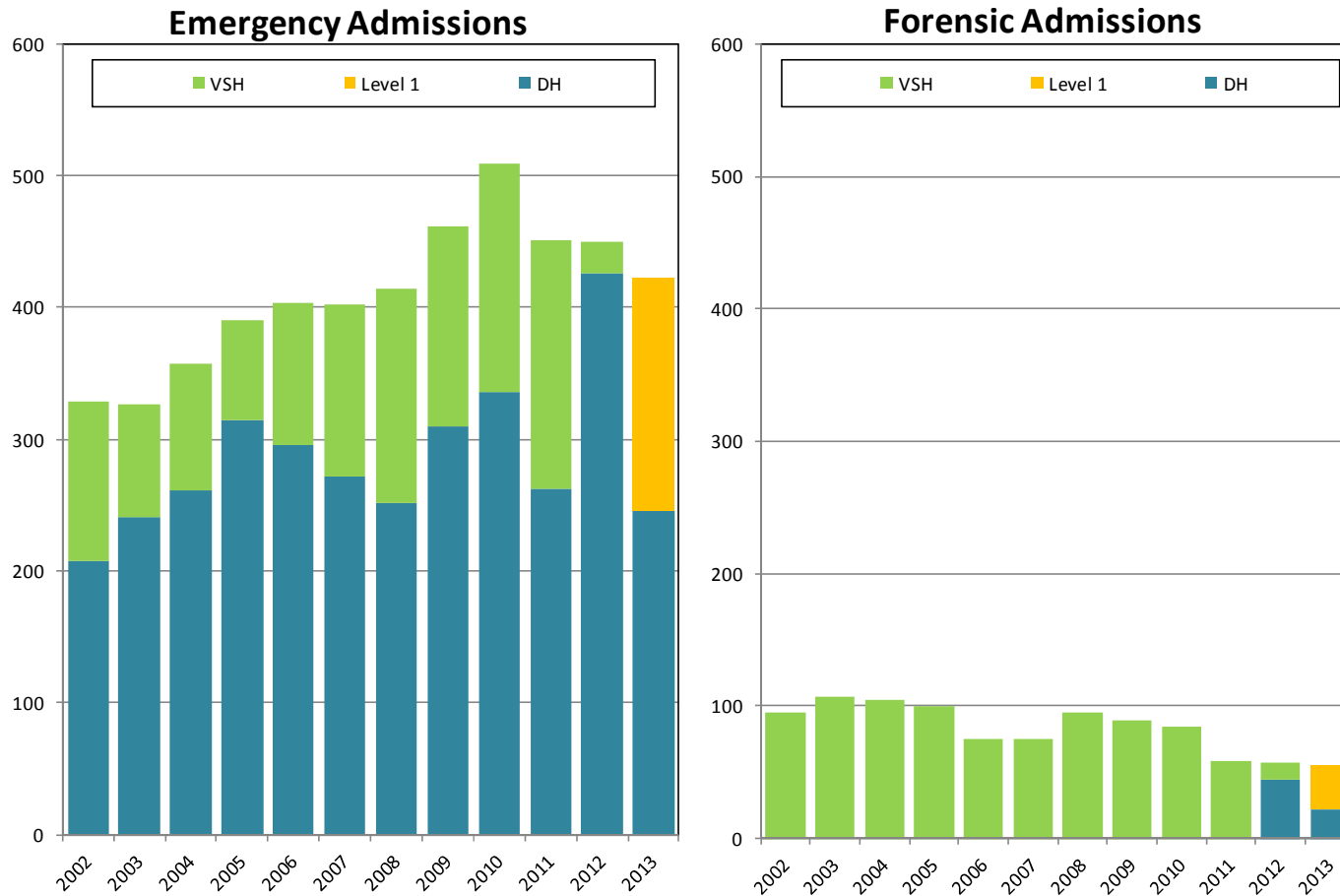


Based on the GMPCC admissions unit's morning update report and end-of-shift reports regarding persons waiting inpatient placement. Includes persons waiting in emergency departments inpatient placement or involuntary and persons waiting in department of corrections for inpatient placement on a court ordered forensic observation.

Based on the GMPCC admissions unit's morning update report and end-of-shift reports regarding persons waiting inpatient placement. Includes persons waiting in emergency departments inpatient placement or involuntary and persons waiting in department of corrections for inpatient placement on a court ordered forensic observation.

- f. Vermont State Hospital and Designated Hospitals, Emergency and Forensic Admissions (FY2002-2013)  
 This graph represents a historical trend of Emergency Exam and Forensic Admissions. FY2014 data will be available for August or September Mental Health Oversight Report.

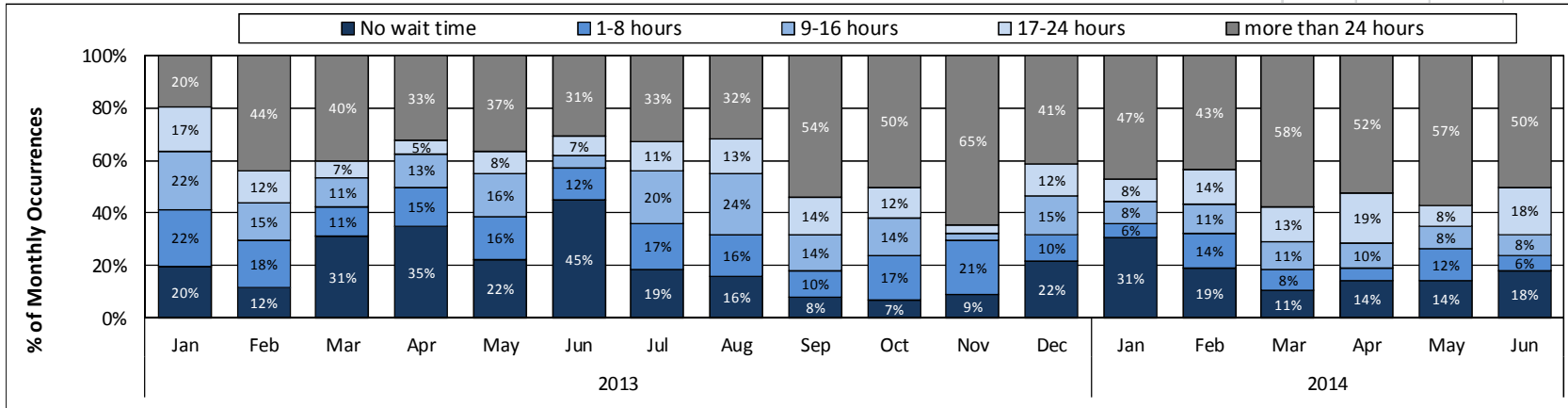
**Vermont State Hospital and Designated Hospitals  
 Emergency and Forensic Admissions  
 FY2002-FY2013**



Analysis based on the Vermont State Hospital (VSH) Treatment Episode Database, and adult inpatient tracking maintained by the Department of Mental Health, Care Management Unit. Includes all admissions during FY2002 - FY2013 with a forensic legal status or emergency legal status at admission.

g. Wait Times in Hours for Involuntary Inpatient Admission (2013-2014)

**Emergency Exams and Warrants, Court Ordered Forensic Observations, and Youth**  
**Wait Times in Hours for Involuntary Inpatient Admission**  
**2013-2014**



Wait time	2013												2014					
	Jan	Feb	Mar	Apr	May	Jun	Jul	Aug	Sep	Oct	Nov	Dec	Jan	Feb	Mar	Apr	May	Jun
No wait time	8	4	14	14	11	19	12	6	4	3	3	9	11	7	4	6	7	9
1-8 hours	9	6	5	6	8	5	11	6	5	7	7	4	2	5	3	2	6	3
9-16 hours	9	5	5	5	8	2	13	9	7	6	1	6	3	4	4	4	4	4
17-24 hours	7	4	3	2	4	3	7	5	7	5	1	5	3	5	5	8	4	9
more than 24 hours	8	15	18	13	18	13	21	12	27	21	22	17	17	16	22	22	28	25
<b>Total</b>	<b>41</b>	<b>34</b>	<b>45</b>	<b>40</b>	<b>49</b>	<b>42</b>	<b>64</b>	<b>38</b>	<b>50</b>	<b>42</b>	<b>34</b>	<b>41</b>	<b>36</b>	<b>37</b>	<b>38</b>	<b>42</b>	<b>49</b>	<b>50</b>

Wait Time in Hours																			
Youth	Mean																		
	Median	27	17	23	21	48	32	8	19	17	39	30	45	49					
EEs/Wrts	Mean	17	36	29	24	35	24	33	18	72	43	60	33	40	56	80	39	48	50
	Median	12	16	14	6	14	3	13	11	31	19	39	14	17	17	39	21	27	20
OBS	Mean	16	48	77	223	87	75	277	269	468	404	525	325	580	652	641	753	288	185
	Median	0	48	0	229	69	34	278	277	489	354	495	281	580	532	641	613	311	151
Total	Mean	17	39	32	49	40	28	61	46	81	86	111	67	68	132	102	106	67	58
	Median	12	19	14	8	14	3	15	15	25	25	46	17	19	19	39	26	28	26

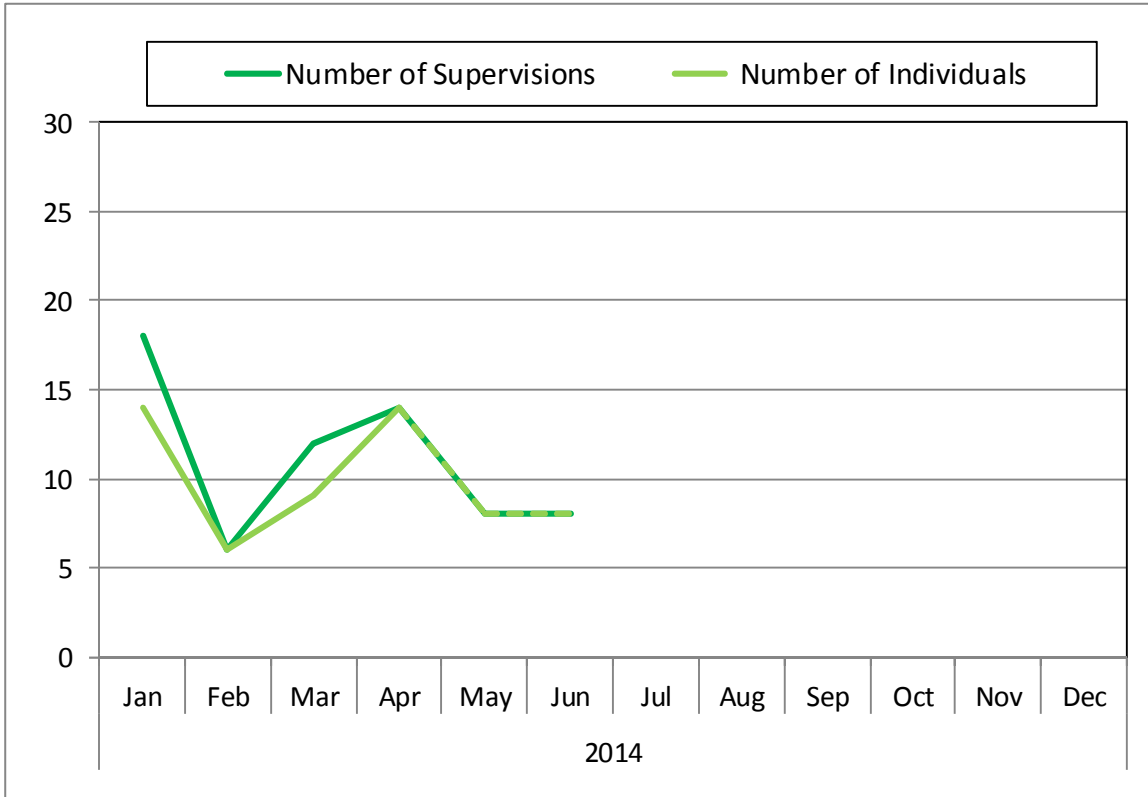
Analysis conducted by the Vermont Department of Mental Health Research & Statistics Unit.  
 Analysis based on data maintained by the VPCH admissions department from paperwork submitted by crisis, designated agency, and hospital screeners. Wait times are defined from determination of need to admission to disposition, less time for medical clearance, for persons on warrant for immediate examination, applications for emergency exam, court ordered forensic observations, and youth waiting for inpatient admission. Wait times are point in time and are categorized based on month of service, not month of disposition, for clients who had a disposition to a psychiatric inpatient unit.



## II. Additional Reporting Requests

### a. Sheriff Supervisions in Emergency Departments

#### Sheriff Supervisions in Emergency Departments 2014

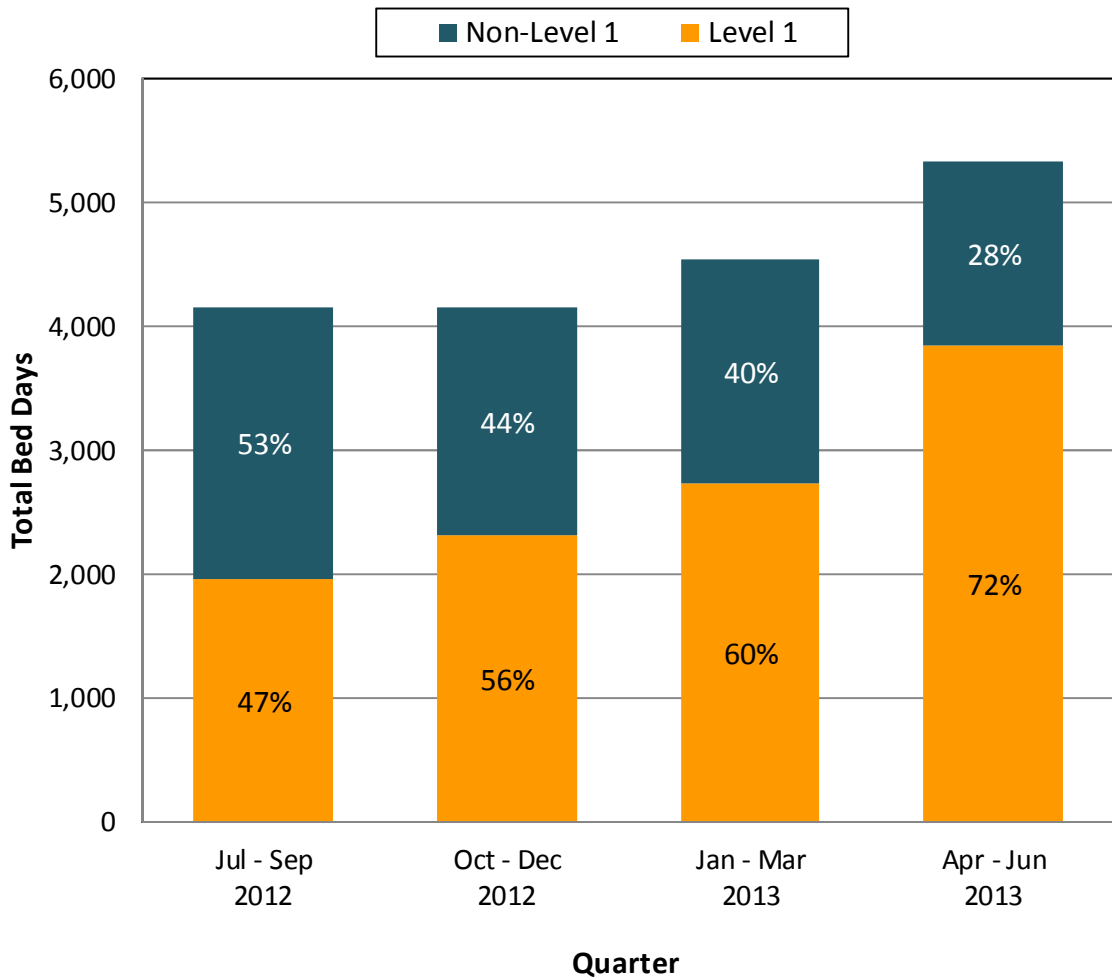


Based on sheriff supervision invoices received by the Department of Mental Health Business Office for supervision of individuals in emergency departments.

b. Involuntary Non-Level 1 and Level 1 bed days (FY2013)

Administrative staff and care managers at the Department are working to complete data records for FY2014. While a majority of FY2014 records are entered, staff are still working to close out records with discharge dates. Once all records for FY2014 are resolved, the Department will be able to report FY2014 bed days as requested.

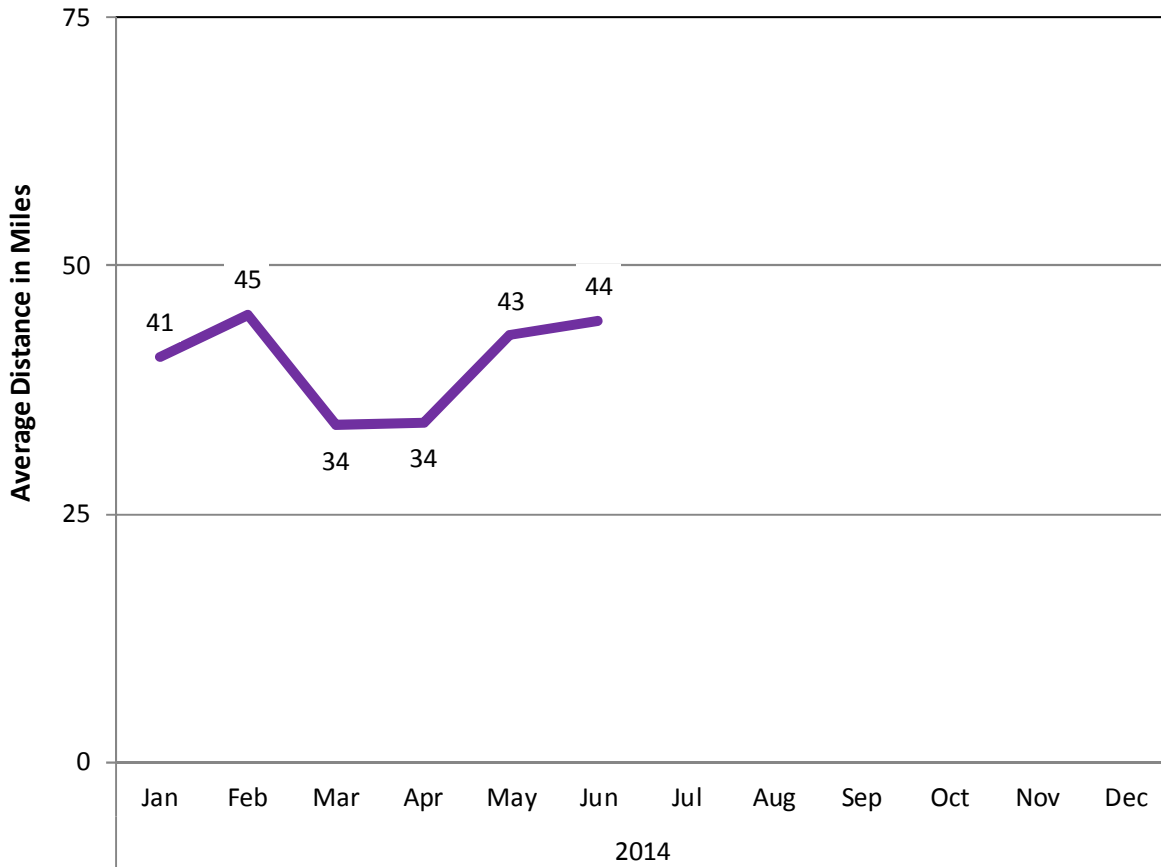
**People with Involuntary Admissions: Bed Days  
Comparison Level 1 and Non-Level 1  
FY 2013**



Analysis is based on the Inpatient Tracking Spreadsheet maintained by the Department of Vermont Health Access (DVHA) for psychiatric hospitalizations with Level 1 Designations, and adult inpatient psychiatric tracking spreadsheet maintained by the Department of Mental Health (DMH), Care Management Unit. Level 1 designation is reserved for patients with risk of imminent harm to self or others and requiring significant resources. Bed days for Level 1 stays can include inpatient days before the Level 1 determination was made due to the payment structure of Level 1 inpatient stays.

c. Average Distance to Psychiatric Inpatient Care (2014)

**Average Distance to Adult Psychiatric Inpatient Care  
From Home to Designated Hospital for Involuntary Stays  
2014**



**Month of Admission**

**2014**

	Jan	Feb	Mar	Apr	May	Jun	Jul	Aug	Sep	Oct	Nov	Dec
Total Cases*	30	26	33	33	41	41						
Average Distance in Miles	41	45	34	34	43	44						

Analysis based on data maintained by the VPCH admissions department from paperwork submitted by crisis, designated agency, and hospital screeners for adults admitted to involuntary inpatient care at Designated Hospitals. Total cases includes persons admitted involuntarily to psychiatric inpatient units, but may also include patients who convert to voluntary upon arrival to the unit. Cases and averages exclude patients with no residency information and patients reported as residing out of state.

d. Outstanding Reporting Requests in Development

On June 24, 2014, the Mental Health Oversight Committee requested additional information to be included in the monthly reports. Explanations for report development of outstanding items are below.

- i. Involuntary Non-Level 1 and Level 1 Bed Days (see p. 10)
- ii. Hospital Admissions, Length of Stay, and Readmissions

Administrative staff and care managers at the Department are working to complete data records for FY2014. While a majority of FY2014 records are entered, staff are still working to close out records with discharge dates. Once all records for FY2014 are resolved, the Department will be able to report length of stay and 30 day readmission rates as requested. Monthly admissions will also be included in this report.

III. Vermont Department of Mental Health System Snapshot (2012-2014)



Vermont Department of Mental Health  
System Snapshot (February 12, 2014)

Reporting Category	2012											
	FY12 Q3			FY12 Q4			FY13 Q1			FY13 Q2		
	Jan	Feb	Mar	Apr	May	Jun	Jul	Aug	Sep	Oct	Nov	Dec
<b>Adult Inpatient Hospital</b>												
% Occupancy	-	-	-	89%	92%	90%	89%	89%	91%	91%	89%	89%
Avg. Daily Census	-	-	-	-	-	-	-	-	-	-	-	-
<b>Adult Crisis Beds</b>												
% Occupancy	-	-	-	72%	80%	80%	77%	75%	72%	78%	82%	86%
Avg. Daily Census	-	-	-	-	-	-	-	-	-	-	-	-
<b>Applications for Involuntary Hospitalizations (EE)</b>												
Youth (0-17)	-	-	-	-	-	-	-	-	-	-	-	-
Adults	-	-	-	28	45	32	43	40	43	44	39	32
Total adults admitted with Level 1	-	-	-	-	-	-	13	11	10	17	11	13
Designation (% of Total applications)	-	-	-	-	-	-	30%	28%	23%	39%	28%	41%
Total adults admitted with CRT	-	-	-	7	15	18	18	11	24	22	14	11
Designation (% of Total applications)	-	-	-	25%	33%	56%	42%	28%	56%	50%	36%	34%
<b>Instances when Placement Unavailable &amp; Client Held in ED</b>												
<b>Involuntary Medications</b>												
# Applications	4	3	7	3	6	4	4	3	4	6	0	2
# Granted Orders	3	2	5	2	1	3	4	2	1	6	-	2
Mean time to decision (days)	20	16	19	15	22	20	11	15	14	13	-	11
<b>Court Ordered Forensic Observation Screenings</b>												
# Requested	-	-	-	-	-	-	17	19	11	8	8	14
# Inpatient Ordered	-	-	-	-	-	-	4	6	4	5	6	9
<b>VT Resident Suicides</b>												
<b>Youth (0-17)</b>												
Total	0	0	0	0	0	0	0	1	1	0	0	0
# with DA contact within previous year	0	0	0	0	0	0	0	0	0	0	0	0
<b>Adults (18+)</b>												
Total	7	6	11	8	9	7	6	4	7	4	3	9
# with DA contact within previous year	2	1	2	3	1	2	2	1	1	1	0	3
<b>Housing</b>												
# Clients permanently housed as a result of new Act79 housing funding	-	-	-	5	10	6	18	20	13	8	0	-
<b>Involuntary Transportation</b>												
<b>Adults (total transports)</b>												
# of Transports	24	14	19	11	23	15	14	13	17	8	15	15
% Non-Restrained	33%	36%	11%	27%	22%	47%	57%	46%	35%	38%	67%	47%
% Restrained	67%	57%	89%	73%	74%	40%	43%	54%	65%	63%	33%	53%
% of Restrained using metal restraints	46%	50%	63%	73%	48%	20%	21%	31%	35%	13%	20%	27%
% of Restrained using soft restraints	21%	7%	26%	0%	26%	20%	21%	23%	29%	50%	13%	27%
<b>Children Under 10 (total transports)</b>												
# of Transports	-	-	-	-	-	-	5	1	0	2	1	1
% Non-Restrained	-	-	-	-	-	-	80%	100%	-	100%	100%	100%
% Restrained	-	-	-	-	-	-	20%	0%	-	0%	0%	0%
% of Restrained using metal restraints	-	-	-	-	-	-	0%	0%	0%	0%	100%	0%
% of Restrained using soft restraints	-	-	-	-	-	-	100%	0%	0%	0%	0%	0%
<b>CRT Employment</b>												
% Employed	14%			15%			15%			16%		
Wages per employed client	\$2,308			\$2,363			\$2,379			\$2,486		



# Vermont Department of Mental Health System Snapshot (April 14, 2014)

\*data forthcoming

Reporting Category	2013											
	FY13 Q3			FY13 Q4			FY14 Q1			FY14 Q2		
	Jan	Feb	Mar	Apr	May	Jun	Jul	Aug	Sep	Oct	Nov	Dec
<b>Adult Inpatient Hospital</b>												
% Occupancy	94%	91%	92%	84%	87%	93%	88%	89%	89%	89%	90%	83%
Avg. Daily Census	137	132	130	134	135	146	138	139	139	143	149	137
% Occupancy at No Refusal Units							100%	96%	99%	99%	99%	98%
Avg. Daily Census							28	27	28	28	28	27
<b>Adult Crisis Beds</b>												
% Occupancy	77%	79%	83%	82%	84%	85%	82%	81%	79%	81%	83%	79%
Avg. Daily Census	27	28	29	29	31	31	30	31	31	31	32	31
<b>Applications for Involuntary Hospitalizations (EE)</b>												
Youth (0-17)	-	-	-	9	10	6	9	7	15	6	4	2
Adults	30	32	35	41	55	39	55	32	43	43	37	39
Total adults admitted with CRT	13	13	27	19	14	11	15	12	9	7	11	19
Designation (% of Total applications)	23%	41%	49%	46%	28%	28%	23%	38%	21%	16%	30%	49%
<b>Total Level 1 Admissions</b>	22	13	20	22	26	10	19	18	13	11	7	14
<b>Instances when Placement Unavailable &amp; Adult Client Held in ED</b>												
	27	21	43	27	38	24	38	16	34	29	30	23
<b>Adult Involuntary Medications</b>												
# Applications	2	3	3	2	9	4	5	7	5	10	9	4
# Granted Orders	2	3	2	2	5	3	5	6	3	4	6	3
Mean time from filing date to decision date (days)	22	12	20	27	19	17	20	14	12	17	9	10
<b>Court Ordered Forensic Observation Screenings</b>												
# Requested	11	13	9	10	11	11	22	20	19	16	13	9
# Inpatient Ordered	3	7	5	5	6	6	11	8	7	5	6	5
<b>VT Resident Suicides</b>												
<b>Youth (0-17)</b>												
Total	0	0	0	0	0	2	0	0	0	1	0	1
# with DA contact within previous year	-	-	-	-	-	1	-	-	-	0	-	1
<b>Adults (18+)</b>												
Total	4	6	10	8	10	5	8	10	14	13	8	6
# with DA contact within previous year	0	3	2	2	1	0	2	1	4	4	1	1
<b>Housing</b>												
# Clients permanently housed as a result of new Act79 housing funding	18	21	14	11	14	5	0	5	0	2	0	0
<b>Total # enrolled to date</b>	98	119	133	144	158	169	169	176	176	168	123	123
<b>Involuntary Transportation</b>												
<b>Adults (total transports)</b>												
# of Transports	19	17	18	11	18	13	18	12	18	15	17	17
% Non-Restrained	58%	94%	81%	82%	78%	85%	72%	75%	83%	100%	94%	65%
% Restrained	42%	6%	39%	18%	22%	15%	28%	25%	17%	0%	6%	35%
% all transports using metal restraints	16%	6%	8%	9%	6%	8%	17%	25%	17%	0%	6%	18%
% all transports using soft restraints	26%	0%	33%	9%	17%	8%	11%	0%	0%	0%	0%	18%
<b>Youth Under 10 (total transports)</b>												
# of Transports	3	3	0	0	0	0	0	0	2	0	0	0
% Non-Restrained	100%	100%	-	-	-	-	-	-	100%	-	-	-
% Restrained	0%	0%	-	-	-	-	-	-	0%	-	-	-
% all transports using metal restraints	0%	0%	-	-	-	-	-	-	0%	-	-	-
% all transports using soft restraints	0%	0%	-	-	-	-	-	-	0%	-	-	-
<b>CRT Employment</b>												
% Employed	15%			16%			17%			15%		
Wages per employed client	\$2,318			\$2,457			\$2,298			\$2,456		



# Vermont Department of Mental Health System Snapshot (July 16, 2014)

\*data forthcoming

Reporting Category	FY14 Q3			FY14 Q4			FY15 Q1			FY15 Q2		
	Jan	Feb	Mar	Apr	May	Jun	Jul	Aug	Sep	Oct	Nov	Dec
<b>Adult Inpatient Hospital</b>												
% Occupancy	87%	88%	89%	91%	93%	89%						
Avg. Daily Census	146	147	151	153	157	150						
% Occupancy at No Refusal Units	98%	98%	100%	100%	99%	100%						
Avg. Daily Census	28	27	28	28	28	28						
<b>Adult Crisis Beds</b>												
% Occupancy	83%	79%	77%	77%	77%	76%						
Avg. Daily Census	32	30	29	29	29	29						
<b>Applications for Involuntary Hospitalizations (EE)</b>												
Youth (0-17)	5	4	7	5	9	10						
Adults	33	32	33	46	42	43						
Total adults admitted with CRT	9	11	6	9	9	12						
Designation (% of Total applications)	24%	34%	23%	20%	21%	28%						
<b>Total Level 1 Admissions</b>	14	8	10	10	17	16						
<b>Instances when Placement Unavailable &amp; Adult Client Held in ED</b>	19	19	27	27	30	32						
<b>Adult Involuntary Medications</b>												
# Applications	6	8	7	4	4	6						
# Granted Orders	5	4	6	4	4	4						
Mean time from filing date to decision date (days)	14	17	14	10	12	9						
<b>Court Ordered Forensic Observation Screenings</b>												
# Requested	6	11	12	14	8	8						
# Inpatient Ordered	2	7	3	5	5	4						
<b>VT Resident Suicides</b>												
<b>Youth (0-17)</b>												
Total	2	0	0	0	0	*						
# with DA contact within previous year	2	0	0	0	0	*						
<b>Adults (18+)</b>												
Total	11	4	5	6	1	*						
# with DA contact within previous year	1	1	0	0	1	*						
<b>Housing</b>												
# Clients permanently housed as a result of new Act79 housing funding	1	2	3	3	4	1						
<b>Total # enrolled to date</b>	124	122	124	131	131	131						
<b>Involuntary Transportation</b>												
<b>Adults (total transports)</b>												
# of Transports	13	15	13	16	13	*						
% Non-Restrained	85%	87%	89%	81%	69%	*						
% Restrained	15%	13%	11%	19%	31%	*						
% all transports using metal restraints	8%	7%	15%	6%	8%	*						
% all transports using soft restraints	8%	7%	15%	13%	23%	*						
<b>Youth Under 18 (total transports)</b>												
# of Transports	4	5	7	4	2	*						
% Non-Restrained	100%	100%	100%	100%	100%	*						
% Restrained	0%	0%	0%	0%	0%	*						
% all transports using metal restraints	0%	0%	0%	0%	0%	*						
% all transports using soft restraints	0%	0%	0%	0%	0%	*						
<b>CRT Employment</b>												
% Employed												
Wages per employed client												



## Vermont Department of Mental Health System Snapshot

### Definitions

<b>Inpatient Hospital</b>	The hospitals designated by the Commissioner of Mental Health for involuntary psychiatric treatment: Brattleboro Retreat (BR), Central Vermont Medical Center (CVMC), Fletcher Allen Health Care (FAHC), Rutland Regional Medical Center (RRMC), Windham Center at Springfield Hospital (WC), and Green Mountain Psychiatric Care Center (GMPCC). Adult Inpatient Units at GMPCC, RRMC - South Wing, and Brattleboro Retreat - Tyler 4. The units designated as no refusal units: BR - Tyler 4, RRMC - South Wing, GMPCC.
<b>Designated Agency Crisis Bed</b>	Emergency Services beds intended to provide crisis intervention, respite, or hospital diversion that are staffed by and under the supervision of a designated community mental health agency (DA). Statewide averages are adjusted to exclude programs on days where there were no updates submitted to the bed board.
<b>Court-ordered Forensic Observations</b>	Forensic patients are designated when there is criminal justice involvement and when there are questions concerning competency/sanity of an individual being arraigned. A screening is requested by a community mental health agency pursuant to §4815 13 VSA. Numbers represent a point in time count mid-month.
<b>Emergency Examination (EE)</b>	An application for emergency examination has been completed for involuntarily admission (§7508 of 18 VSA) to a designated hospital for psychiatric treatment (danger to self or others) subsequent to an evaluation by community mental health agency screener & medical doctor.
<b>Restrained Transport (formerly called Secure)</b>	Transport via law enforcement utilizing either metal or soft restraints.
<b>Non-Restrained Transport (formerly called Non-Secure)</b>	Transport not utilizing restraints; this can include plain clothed law enforcement, Designated Agency transport teams, or other means of transport such as family members.
<b>VT Resident Suicides</b>	Based on <u>PRELIMINARY</u> data from the Vital Statistics System maintained by Vermont Department of Health and Monthly Service Report (MSR) data provided by the Department of Mental Health (DMH). Cross-sector data analysis was conducted using LinkPlus, a probabilistic statistical linkage software developed by the CDC for linking records across databases. MSR data includes services provided by community designated agencies for clients served by DAs within the year prior to death. Primary Program is defined as the primary program assignment on the client's last service with DMH. Monthly counts are subject to change as more information is made available.
<b>Housing</b>	Based on the number of applications approved, in the months the program has been operating and the total approved to date. Enrollment to date numbers do not necessarily sum to total numbers housed. Data cleaning is on-going.



# Adult Inpatient Utilization and Bed Closures: Page 1 of 2

## System Total and Level 1 Units 2014

<span style="display: inline-block; width: 15px; height: 15px; background-color: yellow; border: 1px solid black;"></span> All Units	<span style="display: inline-block; width: 15px; height: 15px; background-color: #a52a2a; border: 1px solid black;"></span> Level 1 Units	<span style="display: inline-block; width: 15px; height: 15px; background-color: #4682b4; border: 1px solid black;"></span> Non-Level 1 Adult Units
--	---	---

	Jan	Feb	Mar	Apr	May	Jun	Jul	Aug	Sep	Oct	Nov	Dec
<b>ADULT INPATIENT UNITS</b>												
Total Beds	169	169	169	169	169	169						
Average Daily Census	137	147	151	153	155	148						
Percent Occupancy	83%	87%	89%	91%	92%	88%						
# Days at Occupancy	0	0	0	0	0	0						
# Days with Closed Beds	31	28	31	30	31	19						
Average # of Closed Beds	6	10	7	3	4	3						
<b>VPCH</b>												
Total Beds	8	8	8	8	8	8						
Average Daily Census	8	8	8	8	8	8						
Percent Occupancy	100%	100%	99%	100%	98%	100%						
# Days at Occupancy	31	27	28	30	26	30						
# Days with Closed Beds	0	0	3	0	0	0						
Average # of Closed Beds	-	-	1	-	-	-						
<b>BR TYLER 4</b>												
Total Beds	14	14	14	14	14	14						
Average Daily Census	14	14	14	14	14	14						
Percent Occupancy	100%	100%	100%	100%	100%	100%						
# Days at Occupancy	29	27	31	30	30	29						
# Days with Closed Beds	0	0	0	0	0	0						
Average # of Closed Beds	-	-	-	-	-	-						
<b>RRMC SOUTH WING</b>												
Total Beds	6	6	6	6	6	6						
Average Daily Census	6	6	6	6	6	6						
Percent Occupancy	98%	100%	100%	99%	100%	99%						
# Days at Occupancy	28	28	31	29	31	29						
# Days with Closed Beds	6	0	1	2	0	0						
Average # of Closed Beds	1	-	1	1	-	-						
<b>Wait Times for Beds</b>												
Average # People Waiting per Day	6	7	11	8	8	8						
Average Wait Times in Days												

Based on data reported to the Vermont Department of Mental Health (DMH) by designated hospitals (DH) for adult inpatient care using the electronic bed boards system. Beds at inpatient settings can be closed based on the clinical decision of the director of each inpatient unit. Average number of people waiting per day is determined using the morning inpatient update and wait times in days are based upon data maintained by the VPCH admissions department that is submitted by crisis, designated agency, and hospital screeners.

# Adult Inpatient Utilization and Bed Closures: Page 2 of 2

## System Total and Non-Level 1 Units 2014

All Units
  Level 1 Units
  Non-Level 1 Adult Units

	Jan	Feb	Mar	Apr	May	Jun	Jul	Aug	Sep	Oct	Nov	Dec
<b>ADULT INPATIENT UNITS</b>												
Total Beds	169	169	169	169	169	169						
Average Daily Census	137	147	151	153	155	148						
Percent Occupancy	83%	87%	89%	91%	92%	88%						
# Days at Occupancy	0	0	0	0	0	0						
# Days with Closed Beds	31	28	31	30	31	19						
Average # of Closed Beds	6	10	7	3	4	3						
<b>CVMC</b>												
Total Beds	14	14	14	14	14	14						
Average Daily Census	12	11	12	11	13	12						
Percent Occupancy	89%	76%	86%	81%	92%	85%						
# Days at Occupancy	8	1	5	1	13	3						
# Days with Closed Beds	0	0	0	0	0	0						
Average # of Closed Beds	-	-	-	-	-	-						
<b>FAHC</b>												
Total Beds	27	27	27	27	27	27						
Average Daily Census	25	20	20	24	24	24						
Percent Occupancy	91%	74%	75%	89%	88%	89%						
# Days at Occupancy	0	0	0	0	0	1						
# Days with Closed Beds	31	27	31	30	29	19						
Average # of Closed Beds	2	7	5	2	2	2						
<b>BR (NON LEVEL 1 UNITS)</b>												
Total Beds	73	73	73	73	73	73						
Average Daily Census	57	67	66	66	68	64						
Percent Occupancy	78%	92%	91%	91%	93%	87%						
# Days at Occupancy	0	0	0	0	0	0						
# Days with Closed Beds	30	28	26	14	26	10						
Average # of Closed Beds	3	2	2	2	2	2						
<b>RRMC GEN PSYCH</b>												
Total Beds	17	17	17	17	17	17						
Average Daily Census	12	15	16	16	17	15						
Percent Occupancy	71%	89%	95%	96%	98%	90%						
# Days at Occupancy	2	4	14	18	20	7						
# Days with Closed Beds	23	24	5	10	12	0						
Average # of Closed Beds	2	1	1	1	1	-						
<b>WC</b>												
Total Beds	10	10	10	10	10	10						
Average Daily Census	6	8	8	7	8	6						
Percent Occupancy	61%	76%	77%	69%	83%	64%						
# Days at Occupancy	1	4	5	3	7	2						
# Days with Closed Beds	3	2	0	0	0	0						
Average # of Closed Beds	6	2	-	-	-	-						
<b>Wait Times for Beds</b>												
Average # People Waiting per Day	6	7	11	8	8	8						
Average Wait Times in Days												

Based on data reported to the Vermont Department of Mental Health (DMH) by designated hospitals (DH) for adult inpatient care using the electronic bed boards system. Beds at inpatient settings can be closed based on the clinical decision of the director of each inpatient unit. Average number of people waiting per day is determined using the morning inpatient update and wait times in days are based upon data maintained by the VPCH admissions department that is submitted by crisis, designated agency, and hospital screeners.